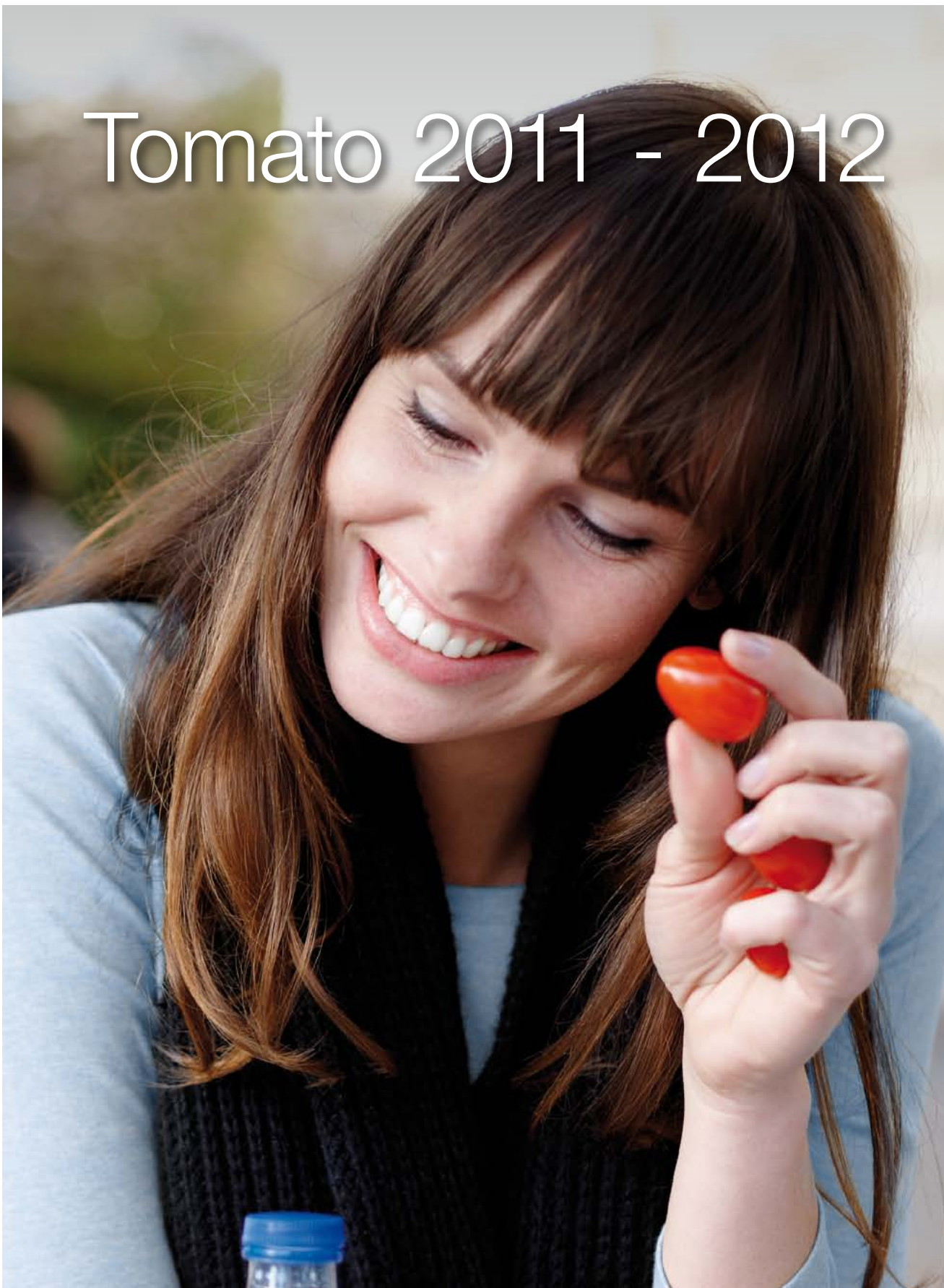


Tomato 2011 - 2012



syngenta.

Tomato 2011 - 2012



Contents

| | |
|--------------------------------------|----|
| Listening to the market | 4 |
| Quality and hygiene | 4 |
| Integrated Crop Management Solutions | 4 |
| Know what the consumer wants | 5 |
| Product information table | 6 |
| Choose your own rootstock | 7 |
| Beef tomatoes | 8 |
| Standard tomatoes | 10 |
| Cluster tomatoes | 12 |
| Plum tomatoes | 14 |
| Mini-cluster tomatoes | 16 |
| Baby plum tomatoes | 18 |
| Coeur de Boeuf tomatoes | 21 |
| Specials | 22 |



A strong tomato chain

Every link in the tomato chain places specific requirements on the product. These requirements particularly involve yield, sustainability, quality and flavour. Syngenta translates these wishes and requirements into innovative total solutions that strengthen your position in the chain.

Listening to the market

The intensive collaboration with a variety of parties in the chain provides our crop breeders with valuable information. They use this information to continually push the boundaries of innovation in crop varieties. The following are examples of characteristics that are examined during the selection process:

- cultivation and climatological conditions
- production potential
- limited energy needs and labour intensity
- shelf-life
- resistance and sustainable cultivation systems

Syngenta offers tomato growers innovative solutions and sustainable yields by means of sophisticated combinations of varieties, growing methods and crop protection.

Quality and hygiene

Syngenta strives to offer the utmost quality in all of its products, from rootstock to varieties and from crop protection to consultancy. Our production techniques, quality standards and monitoring systems are all geared towards this goal. We leave nothing to chance. All steps in the production process are registered, based on the principles of GSPP (Good Seed and Plant Practices).

Integrated Crop Management Solutions

Demands from within the chain are becoming more and more specific. Maximum residue demands are getting lower and lower. Syngenta addresses this issue by means of resistance, but also goes even further than that. In addition to genetic resistances, Syngenta also offers a total solution to reduce residues by combining Bioline biological crop protection agents with chemical crop protection agents of the Syngenta Crop Protection brand.

Know what the consumer wants

Consumer behaviour varies greatly. In order to keep up with consumer trends, we combine traditional market research with our unique consumer panels in Italy, Germany and Great Britain. Our growers then use this information to develop new varieties that clearly stand out from the crowd with regard to flavour, shape, colour or specific constituent substances. This results in consumer-oriented innovations such as:

- Delicious snack tomatoes (Angelle, Dimple and Sweetelle)
- Orange sweet tomatoes
- The Kumato®, a highly recognisable round tomato with an exquisite flavour
- Various varieties of Coeur de Boeuf tomatoes for usage in Mediterranean cuisine.

Do you have any questions relating to the content of this brochure or would you like to visit our demo greenhouse? If so, contact one of our representatives.

We wish you yet another successful harvest this season!



Product information table

| Segment | Variety name | AFW (grams) | Resistances (HR) | Resistances (IR) | Size (mm) / type |
|--------------------------------|--------------------|-------------|--|------------------|------------------|
| Rootstock | Arnold | N/A | Ff: 1-5 / Fol: 1, 2 / For / V / ToMV: 0-2 | PI / M | N/A |
| Beef tomatoes | Growdena | 220-240 | Ff: 1-5 / Fol: 1, 2 / For / ToMV: 0-2 / TMV: 0 / V | | 82-102 |
| | Macarena | 220-240 | Ff: 1-5 / Fol: 1, 2 / For / ToMV: 0-2 / V | | 82-102 |
| | Bigdena | 220-240 | Ff: 1-5 / Fol: 1, 2 / For / ToMV: 0-2 / V / TMV: 0 | | 87-102 |
| | Brightina (T47455) | 200-220 | Ff: 1-5 / Fol: 1, 2 / For / V / ToMV: 0-2 | | 77- 102 |
| Standard tomatoes | Zouk | 170- 180 | Ff: 2, 4 / Fol: 1, 2 / For / TMV: 0 / ToMV: 0-2 | | 67-82 |
| | Euforia | 150- 160 | Ff: 1-5 / Fol: 1, 2 / For, V / ToMV: 0-2 | | 67-77 |
| | Evolution | 160- 170 | Ff: 1-5 / Fol: 1, 2 / For / ToMV: 0-2 / V / TMV 0 | | 67-77 |
| | T48273 | 150-160 | ToMV: 0-2 / V / TMV: 0 / Fol: 0-1 (US1-2) / Ff: A IR: For / On | | 67- 77 |
| Cluster tomatoes | Climberley | 140 | Ff: 1-5 / Fol: 1, 2 / For / V / ToMV: 0-2 | | 57-67 |
| | Classy | 100 | Ff: 1-5 / Fol: 1, 2 / For / ToMV: 0-2 / V | | 47-57 |
| | T48063 | 130-140 | Ff: 2, 4 / Fol: 1, 2 / For / V / TMV: 0 / ToMV: 0-2 / IR: For / On | | 57- 77 |
| Plum tomatoes | Celine | 90-100 | Ff: 1-5 / Fol: 1, 2 / For / ToMV: 0-2 / V | M | Pruim |
| | T38320 | 90-100 | Ff: 1-5 / Fol: 1, 2 / V / TMV: 0 / ToMV: 0-2 | M | Pruim |
| | T35206 | 90-100 | Ff: 1-5 / Fol: 1, 2 / For / V / ToMV: 0-2 | M | San Marzano |
| Mini-cluster tomatoes | Idoia | 35-40 | Ff: 1-5/ Fol: 1, 2 / For / ToMV: 0-2 / V | M | Cocktail |
| | Mona Lisa | 35-40 | Ff: 1-5 / Fol: 1 / For / S / Ss / ToMV: 0-2 / V | M | Pruim Cocktail |
| | Dunne | 20-30 | Fol: 1, 2 / ToMV: 0-2 | M | Mini San Marzano |
| Baby plum tomatoes | Angelle | 10-12 | ToMV: 0-2 | M | Snack tomato |
| | Dimple | 10-12 | Ff: 1-5 / Fol: 1 / ToMV: 0-2 | M | Snack tomato |
| | Sweetelle | 10-12 | Ff: 1-5 / Fol: 1 / ToMV: 0-2 | M | Snack tomato |
| | T38162 | 11-13 | TMV: 0 / ToMV: 0-2 | | Snack tomato |
| | 309522 | 10-11 | | | Snack tomato |
| Coeur de Boeuf tomatoes | Arawak | 200-240 | ToMV: 0-2 / V | | Coeur de Boeuf |
| | Tomawak | 180 - 220 | Fol: 1, 2 / For / S / Ss / ToMV: 0-2 / V | M | Coeur de Boeuf |
| Specials | Bubu | 200-220 | Ff: 1-5 / Fol: 1, 2 / For / V / ToMV: 0-2 | TYLCV | 77- 92 |
| | KM5512 | 20 | Ff: 0-5 / Fol: 1 / ToMV: 0-2 / TMV: 0 | | Snack tomato |

Choose your own rootstock

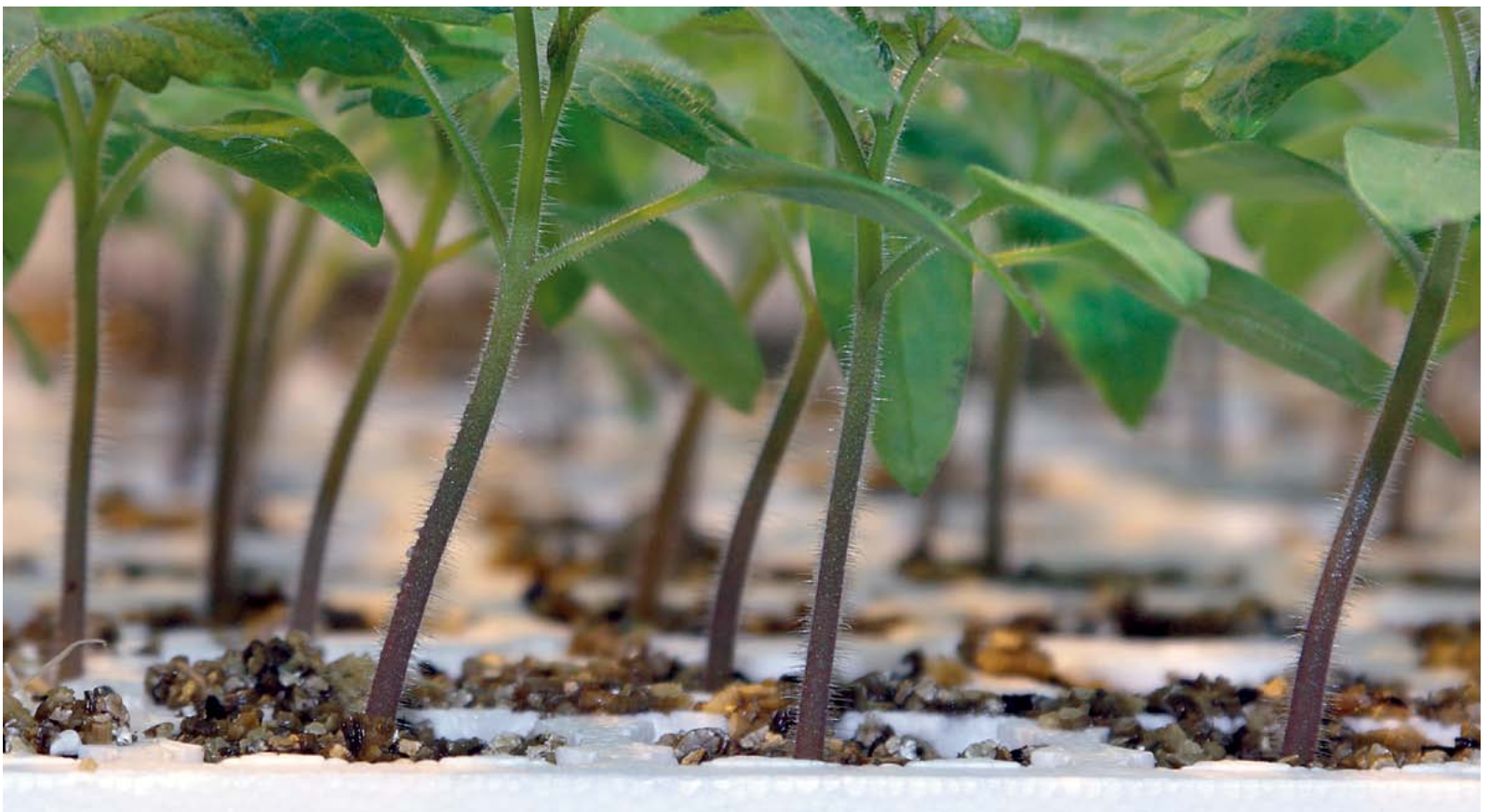
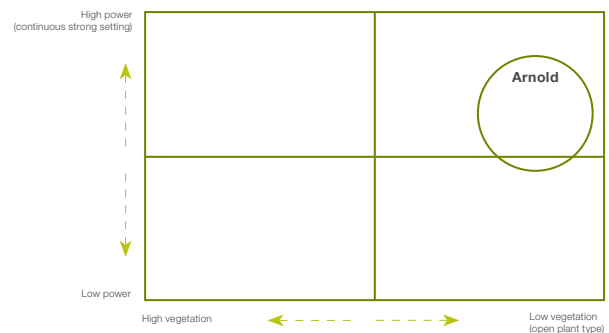
Rootstocks allow you to create a perfect balance between vigour (quantity of vegetation) and fruit production capacity (generative parts). We offer you many different varieties of rootstock that are suited to your specific circumstances or cultivation objectives (main variety, head density, type of greenhouse, availability of energy/CO2 and personal targets) and therefore contribute to higher yields.

Arnold: broadly applicable

Afgelopen jaar is de onderstam Arnold veel toegepast. Deze onderstam is geschikt voor uiteenlopende segmenten (zoals vlees-, cocktail- en snoeptomaatjes) en teeltomstandigheden.

What is the right rootstock for you?

To indicate the characteristics of particular rootstocks, we analysed them with regard to two variables: quality/vigour of the settlement of the rootstock (high/low) and the amount of vegetation (high/low) of the plant. Based on these qualities, you can choose the most suitable rootstock in accordance with your individual cultivation conditions.



Beef tomatoes

Growdena



Advantages

For the grower

- Uniform fruit growth of 220-240g, extremely consistent throughout the season.
- Offers high yields in active greenhouse.
- Produces large fruits for harvest from the spring onwards, to satisfy tomato connoisseurs throughout the entire season.
- Very vigorous plant variety with significant leaf length during the summer.
- Crop is less labour-intensive as a result of relatively low formation of unwanted shoots.
- Easy-to-process crop that is quickly harvestable.

For businesses and consumers

- Attractive, shiny, lightly mottled appearance.
- Very good shelf life and very easy to sort due to firm flesh.
- Easy to cut, with a good flesh structure.

Macarena



Advantages

For the grower

- Very vigorous crop with an early production.
- Plant has a compact structure with a large leaf length.
- Can be harvested when red.
- Easy leaf-cutting and harvesting.
- Extremely suited to grafted crops, replanted/intermediate crops and ground crops.
- Uniform fruit shape.
- Remains dense throughout the season.

For businesses and consumers

- Attractive, lightly mottled fruit.
- Good flavour and high resistance against mealiness.
- Very firm fruit flesh and a long shelf life.

Bigdena



Advantages

For the grower

- Plant with good early production and regular settlement.
- Medium-sized plant, retains good leaf length during the summer.
- Requires generative management in the spring.
- Good combination with grafting.
- Uniform quality and shape.
- Retains its size and shape.

For businesses and consumers

- Consistently round fruits.
- Good flavour, attractive shape.
- Very firm fruit flesh and a long shelf life.

Brightina (T47455)



Advantages

For the grower

- Excellent puncture resistance.
- Excellent early production and high total production.
- Good balance between vegetation and vigour, more open plant variety with sufficient vigour.

For businesses and consumers

- Attractive, flat, round, mottled fruits with a shiny dark red colour ensure good presentation.
- Excellent goldspeck resistance.
- Excellent shelf-life.

Standard tomatoes

Zouk



Advantages

For the grower

- Very early production combined with a high total yield.
- Fruit weight of between 170-180g.
- Flat, round fruit with a deep red colour and a short calyx.
- Highly resistant to cracking.
- Vigorous plant with sufficient reserves for the summer.
- Grafting is recommended to ensure an optimal crop.

For businesses and consumers

- Attractive deep red colour with good uniformity.
- Good degree of firmness ensures excellent shelf life.
- Available regularly throughout the season to meet consumer expectations.

Euforia



Advantages

For the grower

- Fruit weight of between 150-160g.
- Strong, vigorous plant type.
- Early variety with a high total yield.

For businesses and consumers

- Perfect quality: fruit has an attractive round shape and a good shine.
- Very uniform, ensuring good presentation.
- Consistent quality and shelf life.

Evolution



Advantages

For the grower

- Fruit weight of between 160-170g.
- Very balanced plant, easy to cultivate.
- Flower development and settlement remain strong throughout the year.

For businesses and consumers

- Very round, uniform shape.
- Attractive and firm fruits of very reliable quality throughout the year.
- Highly resistant to cracks and microcracks during the summer.

T48273*



Advantages

For the grower

- Fruit weight of between 150-160g.
- Intermediate oidium resistance.
- Early variety with a high total yield.
- Suitable for early sowing due to good settlement and speed in lower light conditions.

For businesses and consumers

- Flat, round, lightly ribbed tomato.
- Attractive, shiny, firm fruits that are less vulnerable to tears due to shrinkage.

* *Trial variety*

Cluster tomatoes

Climberley



Advantages

For the grower

- Tomato clusters with five fruits, each with an average weight of 140g.
- Very easy plant type, easily manageable.
- Labour and energy-efficient plant.
- Very suitable for winter and spring crops.

For businesses and consumers

- Uniform fruits present an attractive cluster for the consumer.

Classy



Voordelen

Voor de teler

- Een middeltröstomaat met zes vruchten.
- Vrij sterke groeikracht en daardoor ook een goed productiepotentieel.
- Hogere trosaanmaak.
- Minder gevoelig voor Botrytis.

Voor handel en consument

- Zeer aantrekkelijke dieprode kleur.
- Goede houdbaarheid en zeer mooie groene delen.
- Zeer goede smaak voor een tröstomaat.

T48063*



Advantages

For the grower

- Medium cluster tomato with a weight of around 125-140g.
- Very vigorous crop with sufficient leaf size for the summer.
- High production potential.
- Intermediate oidium resistance.

For businesses and consumers

- Attractive dark-red fruits with excellent flavour (Brix value of around 5 - 5.5).
- Fruits and stems have a good level of shelf-life.

* Trial variety



Plum tomatoes

Celine



Advantages

For the grower

- Plum-shaped fruit, weight of 90-100g.
- Regular fruit capacity of 6-7 fruits per cluster.
- Vigorous plant, ensuring a high total yield.
- Open and regular plant variety.

For businesses and consumer

- Extremely consistent plum shape throughout the whole season.
- Excellent shelf life.
- A flavoursome plum tomato with countless potential uses in both hot and cold meals.

T38320*



Advantages

For the grower

- Distinctive, long, plum shape.
- Regular plant load of 100-120g.
- Vigorous plant with a high total yield.
- Suitable for separate harvesting.

For businesses and consumers

- Consistent plum shape from the very first cluster: ensures excellent presentation and good recognition throughout the whole season.
- Excellent shelf-life.

* Trial variety

T35206*



Advantages

For the grower

- A San-Marzano variety with resistance against C5 and very strong resistance to tip rot.
- A crop with a very strong settlement and sufficient leaf volume to survive the summer.
- A short plant.

For businesses and consumers

- Uniform, distinctive, cylindrical fruits throughout the whole season.
- Attractive red fruits with an excellent shelf life.

* Trial variety

Mini-cluster tomatoes

Idoia



Advantages

For the grower

- Outstanding flower production and settlement.
- High total production.
- Quick cluster development with average fruit weights of 35-40g.
- Very vigorous plant variety.
- Highly resistant to cracking.

For businesses and consumers

- The flat cluster shape and uniform fruit weight ensures good presentation.
- Excellent flavour (based on PPL flavour model).

Mona Lisa



Advantages

For the grower

- A vigorous cocktail plum tomato.
- Very suitable for harvesting by the cluster.

For businesses and consumers

- Very attractive presentation due to the deep red, shiny fruits and the strong stems.
- A simply delicious flavour.
- Weight of around 35g per fruit.

Dunne



Advantages

For the grower

- Fast growing and vigorous plant with good flower production.
- Rapid cluster development and a uniform fruit shape.
- Easy crop – quite open with hanging-down leaves.
- Vigorous plant with reduced vulnerability to Botrytis.

For businesses and consumers

- The very best flavour: very balanced, aromatic and with a very high sugar content.
- Ideal product for a broad range of uses.
- Typical distinctive shape.

Baby plum tomatoes

Angelle



Advantages

For the grower

- Plant with sufficient strength to grow rapidly under generative conditions.
- Crop quality remains high in the summer.
- Very easily harvestable fruits with an average weight of 10-12g.
- Strong stem attachments and less prone to cracks.
- Good production potential.

For businesses and consumers

- Very sweet flavour (high Brix value) and a very high consumer appreciation rating.
- Attractive shine and deep red colour.

Dimple



Advantages

For the grower

- A more open, generative plant variety with very high and early production.
- High total production.
- Very easily harvestable fruits with an average weight of 10-12g.

For businesses and consumers

- Very sweet flavour (high Brix value).
- Distinctive elongated shape.

Sweetelle (T36995)



Advantages

For the grower

- Generative variety with a good balance between vigour and vegetation.
- High production potential due to high production speed.
- Good fruit attachment prevents fruits from falling off.
- Produces long, simple clusters with very uniform fruits.

For businesses and consumers

- Snack tomato with a very high Brix value and the highest sweetness rating in the consumer studies.
- Uniform fruits and excellent shelf life.

T38162*



Advantages

For the grower

- A very stable variety with stable leaf length in both winter and summer.
- Stable plant with a high percentage of simple clusters.
- Attractive red fruits with an average weight of 11-13g.
- High production potential and lower harvesting costs due to the higher density.
- Good fruit attachment prevents fruits from falling off.

For businesses and consumers

- Snack tomato with a good flavour.
- Slightly ribbed fruits – easily recognisable to the consumer.

* Trial variety

309522*



Advantages

For the grower

- Firm, uniform, fruits that are sufficiently firmly attached to the plant.
- Extremely vigorous plant, easily retains leaf length and strength.
- High production potential, comparable with the red snack tomatoes in the same segment.

For businesses and consumers

- Extremely attractive orange fruits ensure excellent presentation.
- Highest Brix value and best-tasting orange snack tomatoes in this segment.

* *Trial variety*

Coeur de Boeuf tomatoes

Arawak



Advantages

For the grower

- 200-240g in weight.
- Consistently shaped fruits throughout the season.
- Ripens from the inside out.
- Medium-sized plant variety with good flower and fruit production.
- Retains a good leaf length in the summer.

For businesses and consumers

- The shape is reminiscent of traditional tomato varieties.
- Optimal flavour when combined with soft cheeses.
- Good shelf life.

Tomawak



Advantages

For the grower

- Individual fruit weights of 180-220g, pruned to four fruits per cluster.
- Clearly recognisable Coeur de Boeuf shape, although a little less pear shaped.
- More vegetative plant variety.

For businesses and consumers

- Very attractive and consistent fruits.

Specials

Bubu



Advantages

For the grower

- 200-240g in weight.
- A highly distinctive product with an excellent flavour.
- Ripens from the inside out.

For businesses and consumers

- A greenback tomato with a flavour reminiscent of southern tomatoes.
- Can be used both as a green-collar tomato and as a red tomato.
- Good shelf-life.

KM5512



Advantages

For the grower

- A brown tomato with a weight of 20g.
- A more open plant variety in the summer.

For businesses and consumers

- Extremely attractive dark-brown colour in combination with an excellent flavour.
- Excellent presentation in a mix pack.



Attention
for detail...

...makes perfect
tomato seeds



syngenta.

The highest level of hygiene, for healthy tomatoes

Extracting the seeds for the best tomatoes in the world requires great attention to detail. At Syngenta, we work according to the strict rules of Good Seed and Plant Practice. With GSPP, every detail counts. Nothing is left to chance to ensure the excellent condition of our tomato seeds. For healthy and steady agronomical success of tomato growers all over the world. Our customers trust us with their life's work. We care. So when it comes to GSPP and quality, we will strive to be perfect. www.sg-vegetables.com/gssp





Syngenta Seeds Ltd
CPC4 Capital Park
Fulbourn, Cambridge
CB21 5XE
United Kingdom

Tel: 0845 602 5239
Fax: 01223 882238

www.sg-vegetables.com

Contact information

Cultivation

Frank van Antwerpen

Tel. +31 (0) 651 23 55 15
frank.antwerpen_van@syngenta.com

Peter Geerts

Tel. +32 (0) 475 31 59 99
peter.geerts@syngenta.com

Crop protection

Caroline van den Hoek

Tel. +31 (0) 653 17 51 91
caroline.hoek_van_den@syngenta.com

Vince van der Gaag

T +31 (0) 610 64 62 71
vince.van_der_gaag@syngenta.com

Tom van der Gouw

Tel. +31 (0) 651 80 20 14
tom.gouw_van_der@syngenta.com

Used short references High Resistances (HR)

| | |
|----------|---|
| ToMV 1-2 | Tomato Mosaic Virus strain 1-2 |
| V | Verticillium dahliae, V.albo-atrum, race 1 |
| Fol 1, 2 | Fusarium oxysporum f.sp. lycopersici race 1,2 |
| For | Fusarium oxysporum f.sp. radicis-lycopersici |
| Ff 1-5 | Fulvia fulva race 1-5 |
| Ss | Stemphylium spp. |
| Ss | Stemphylium solani |

Used short references Intermediary Resistances (IR)

| | |
|----|--|
| On | Oidium neolycopersici |
| M | Meloidogyne arenaria, M. incognita, M. javanica nematodes Oidium neolycopersici |
| PI | Pyrenochaeta lycopersici |

Syngenta Seeds Vegetables has exercised reasonable care and skill in compiling this brochure. All resistances quoted refer only to races or pathotypes indicated at the varieties. Other pathogen races or pest biotypes capable of overcoming the resistance may exist or emerge.

Syngenta Seeds Vegetables use highly elaborate analytical methods to verify specific variety resistances. Specificity of pests or pathogens may vary over time and space and depends on environmental factors. In order to maximize the efficiency of a resistance, it is highly recommended to mix different ways of control such as growing conditions, plant protection products and genetic resistance as part of an integrated Crop management.

All data in this brochure is intended for general guidance only and the user should apply it in accordance with their own knowledge and experience of local conditions. In case of doubt we recommend that a small scale trial production be carried out to determine how local conditions may affect the variety. Syngenta Seeds cannot accept any liability in connection with this production.